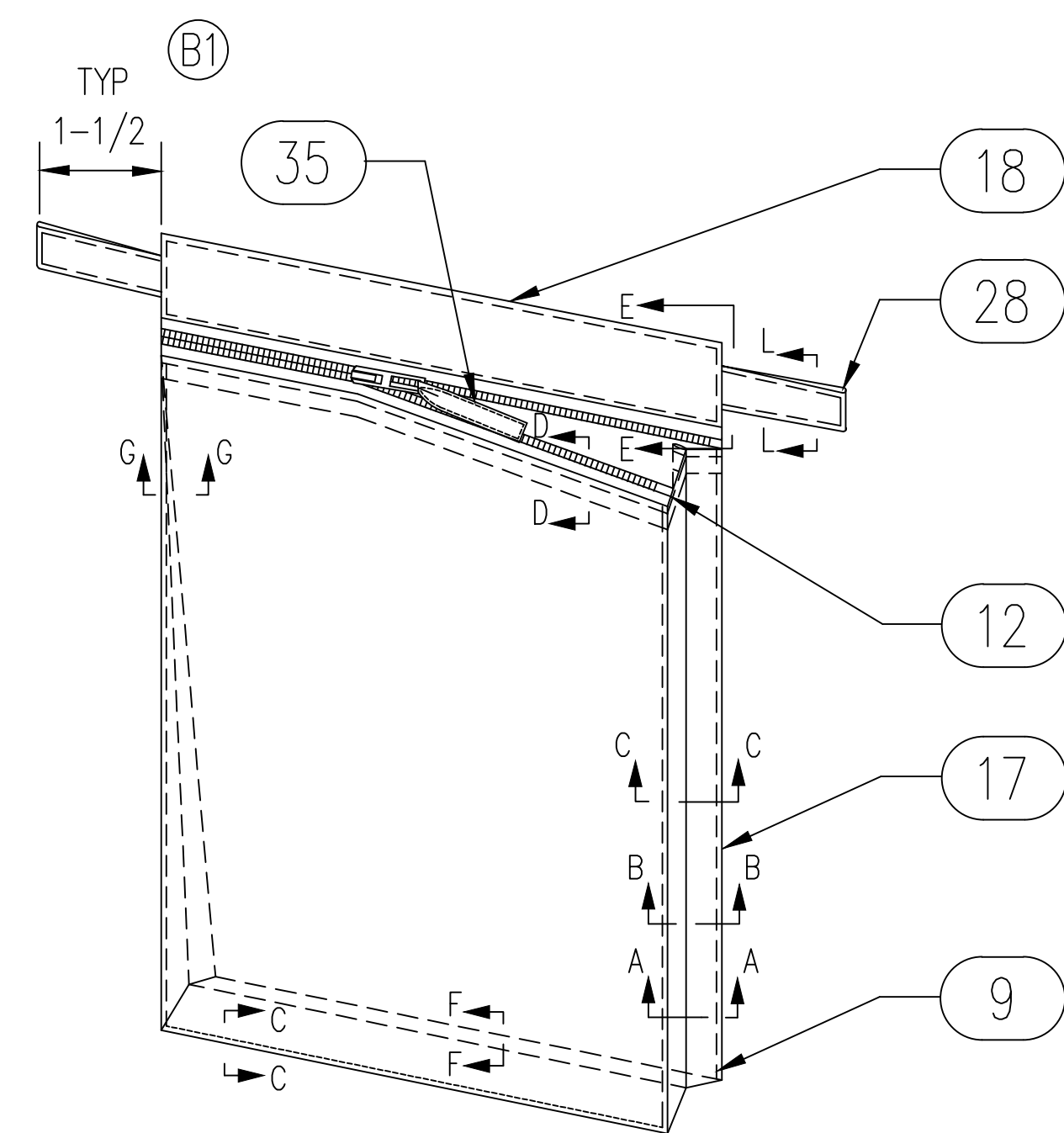




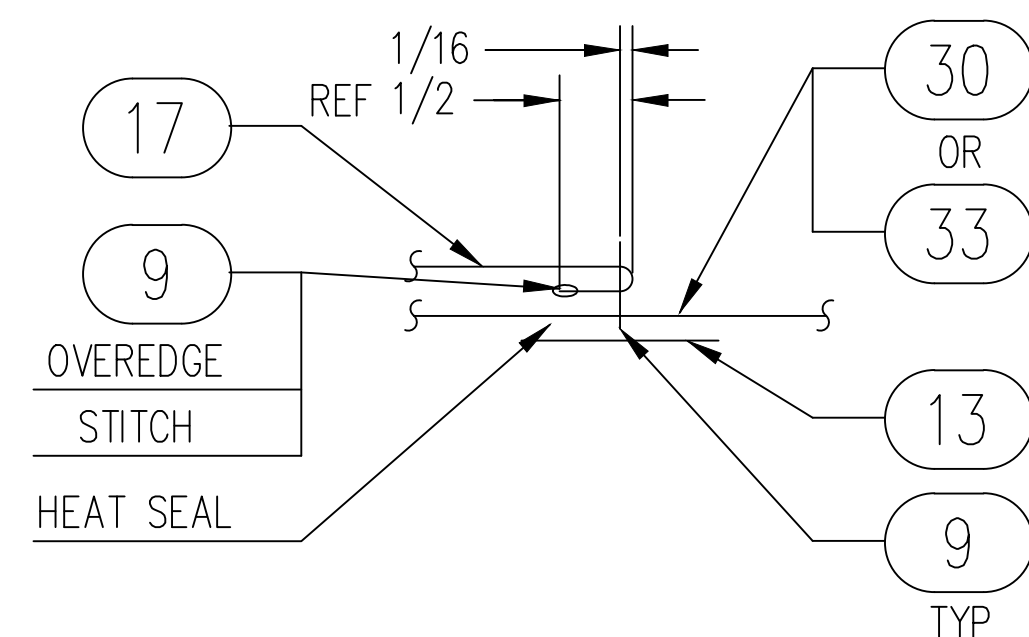
CAD MAINTAINED. CHANGES SHALL BE
INCORPORATED BY THE DESIGN ACTIVITY.

D	35	3769AS105-1A & -3A	AR	3769AS101-47A	THONG, ZIPPER PULL	LAMINATED CLOTH	AS-PD-24-16	
	34	3769AS105-2A & -3A	AR	SLEEVE_V	SLEEVE V	LAMINATED CLOTH	AS-PD-24-16	
	33	3769AS105-1A & -4A	AR	BACK_LEG_V	BACK LEG V	LAMINATED CLOTH	AS-PD-24-16	
	32	3769AS105-1A & -4A	AR	FRONT_V	FRONT V	LAMINATED CLOTH	AS-PD-24-16	
	31	3769AS105-2A & -3A	AR	SLEEVE_IV	SLEEVE IV	LAMINATED CLOTH	AS-PD-24-16	
	30	3769AS105-1A & -4A	AR	BACK_LEG_IV	BACK LEG IV	LAMINATED CLOTH	AS-PD-24-16	
	29	3769AS105-1A & -4A	AR	FRONT_IV	FRONT IV	LAMINATED CLOTH	AS-PD-24-16	
	28	3769AS105-1A & -2A	AR	PKTTAB	POCKET TAB	LAMINATED CLOTH	AS-PD-24-16	△8
	27	3769AS105-4A	AR	KPKTBCKNG_V	KNIFE POCKET BACKING V	LAMINATED CLOTH	AS-PD-24-16	
	26	3769AS105-4A	AR	KNIFEPKTRNF	KNIFE POCKET REINFORCEMENT	LAMINATED CLOTH	AS-PD-24-16	
	25	3769AS105-4A	AR	KPKTBKNG_IV	KNIFE POCKET BACKING IV	LAMINATED CLOTH	AS-PD-24-16	
	24	3769AS105-4A	AR	KNIFE_PKT	KNIFE POCKET	LAMINATED CLOTH	AS-PD-24-16	
	23	3769AS105-3A	AR	PEN_PKT_FLP	PENCIL POCKET FLAP	LAMINATED CLOTH	AS-PD-24-16	
	22	3769AS105-3A	AR	LSLV_PKTSDE	LEFT SLEEVE POCKET SIDE	LAMINATED CLOTH	AS-PD-24-16	
	21	3769AS105-3A	AR	LSLEEVE_PKT	LEFT SLEEVE POCKET	LAMINATED CLOTH	AS-PD-24-16	
	20	3769AS105-3A	AR	PENCIL_PKT	PENCIL POCKET	LAMINATED CLOTH	AS-PD-24-16	
19	3769AS105-2A	AR	GLOVE_PKT	GLOVE POCKET	LAMINATED CLOTH	AS-PD-24-16		
18	3769AS105-1A	AR	CALF_PKTUPR	CALF POCKET UPPER	LAMINATED CLOTH	AS-PD-24-16		
17	3769AS105-1A	AR	CALF_PKT	CALF POCKET	LAMINATED CLOTH	AS-PD-24-16	△5	
16								
15	3769AS105-1A & -4A	AR	3769AS105-15A	BINDING, BIAS	LAMINATED CLOTH	AS-PD-24-16	△6	
14	3769AS105-4A	1	3769AS105-14	GROMMET	BRASS	SIZE 00, BLACK		
13	3769AS105-1A THRU -4A	AR	1370AS502 -1	TAPE, SEAM (HEAT) 1 WIDE	HEAT SEAL TAPE	1370AS502-1 OR -4		
12	3769AS105-1A & -3A	3	3769AS105-12	ZIPPER	ARAMID METAL	A-A-55634	△3 △6	
11	3769AS105-1A THRU -4A	AR	3769AS105-11	TAPE, HOOK, 3/4 WIDE	NYLON	A-A-55126, TYII, C1	△6	
10	3769AS105-1A THRU -4A	AR	3769AS105-10	TAPE, PILE, 3/4 WIDE	NYLON	A-A-55126, TYII, C1	△6	
9	3769AS105-1A THRU -4A	AR	3769AS105-9	THREAD, STITCHING	ARAMID	A-A-50195	△9 △6	
8								
7								
6								
5								
4	3769AS201-1THRU 24A 3769AS101-1 THRU 12A	1EA	3769AS105-4A	KNIFE POCKET, SUBASSEMBLY			△6	
3	3769AS201-1THRU 24A 3769AS101-1 THRU 12A	1EA	3769AS105-3A	LEFT SLEEVE POCKET			△4 △6	
2	3769AS201-1THRU 24A 3769AS101-1 THRU 12A	2EA	3769AS105-2A	GLOVE POCKET, SUBASSEMBLY			△2 △6	
1	3769AS201-1THRU 24A 3769AS101-1 THRU 12A	2EA	3769AS105-1A	CALF POCKET, SUBASSEMBLY			△2 △3 △6 △7	
FIND NO.	NEXT ASSEMBLY	QTY REQD	PART NUMBER	DESCRIPTION	MATERIAL	MATERIAL SPECIFICATION	NOTE	
PARTS LIST								

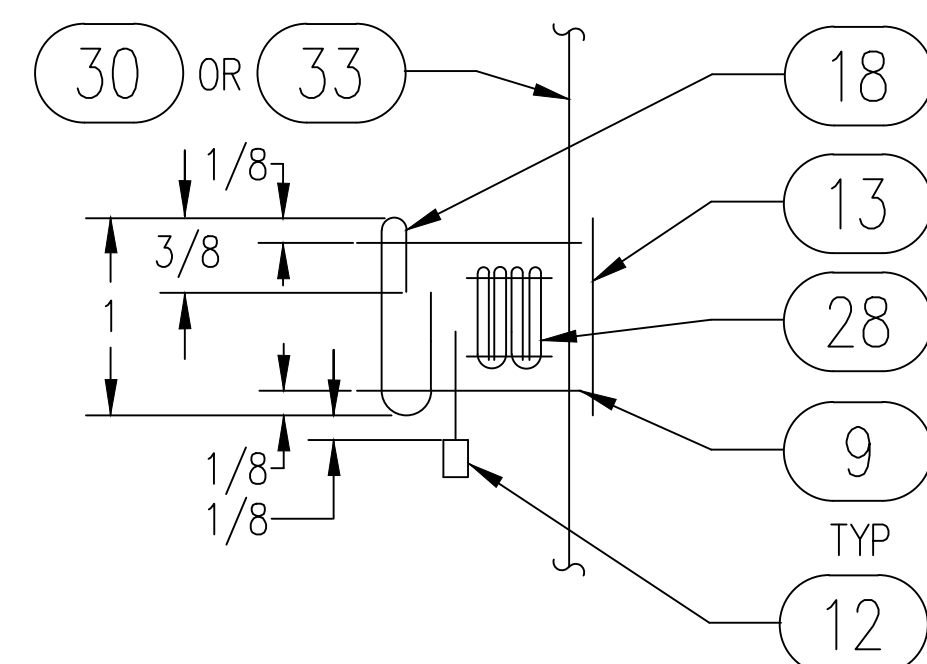
DISTRIBUTION STATEMENT A: APPROVED FOR PUBLIC RELEASE; DISTRIBUTION IS UNLIMITED.		INTERPRET DRAWING IAW ASME Y14.100		NAVAL AIR WARFARE CENTER AIRCRAFT DIVISION/PATUXENT RIVER HUMAN SYSTEMS ENGINEERING DEPT. (4.6.)		DEPARTMENT OF THE NAVY NAVAL AIR SYSTEMS COMMAND PATUXENT RIVER, MD 20670-1628							
		UNLESS OTHERWISE SPECIFIED DIMENSIONS ARE IN INCHES TOLERANCES SHALL NOT BE CUMULATIVE		DRAFTSMAN J. SIWNSKI		DATE 18MAR05		POCKETS SUBASSEMBLY, FLYERS' ANTIEXPOSURE* *RUGGEDIZED CWU-86/P & CWU-87/P					
		FRACTIONS ANGLES °0'30"		CHECKER B. HARVEY		DATE 18MAR05							
		DECIMALS .XXX .XXXX		PROJECT ENGINEER <i>Joe DeBryan</i>		DATE 18MAR05							
		3769AS201 CWU-87/P 3769AS101 CWU-86/P		SURFACE TEXTURE IAW ANSI B96.1		PROJECT TEAM LEADER/ SYSTEM ENGINEER <i>Jose Caporale</i>		SIZE D		CAGE NO. 30003		NAVAIR DWG. NO. 3769AS105	
NEXT ASSY USED ON		REMOVE ALL BURRS. BREAK		SCALE NONE		SEE 2002-12		SHEET 1 OF 3					
APPLICATION													



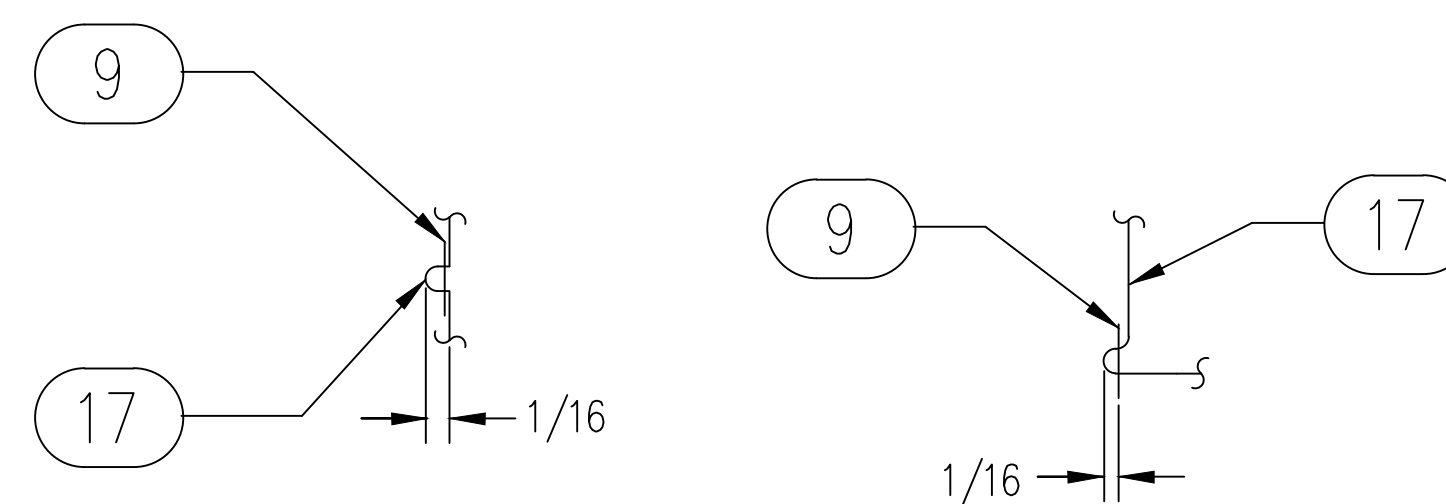
1 SUBASSEMBLY 1
LEFT SIDE SHOWN RIGHT SIDE OPPOSITE



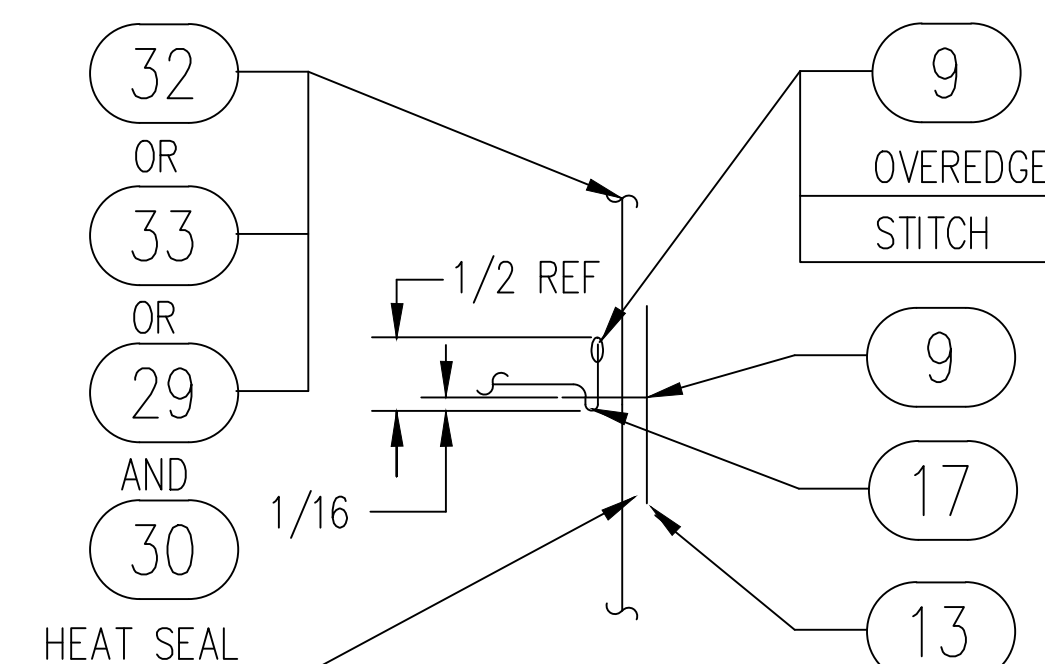
SECTION A - A



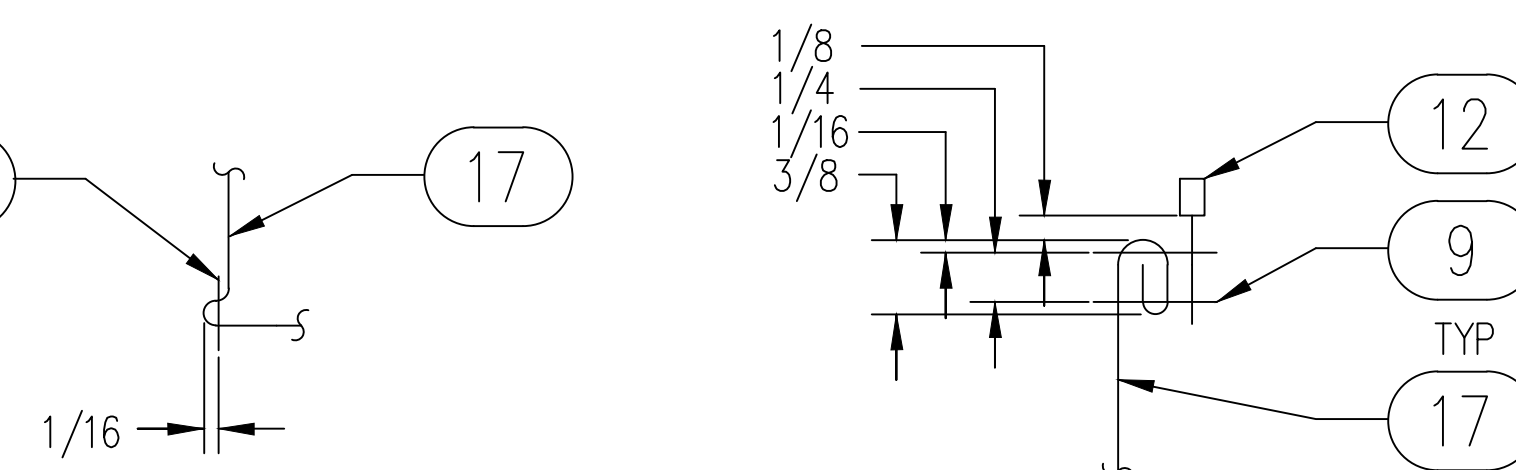
SECTION E - E



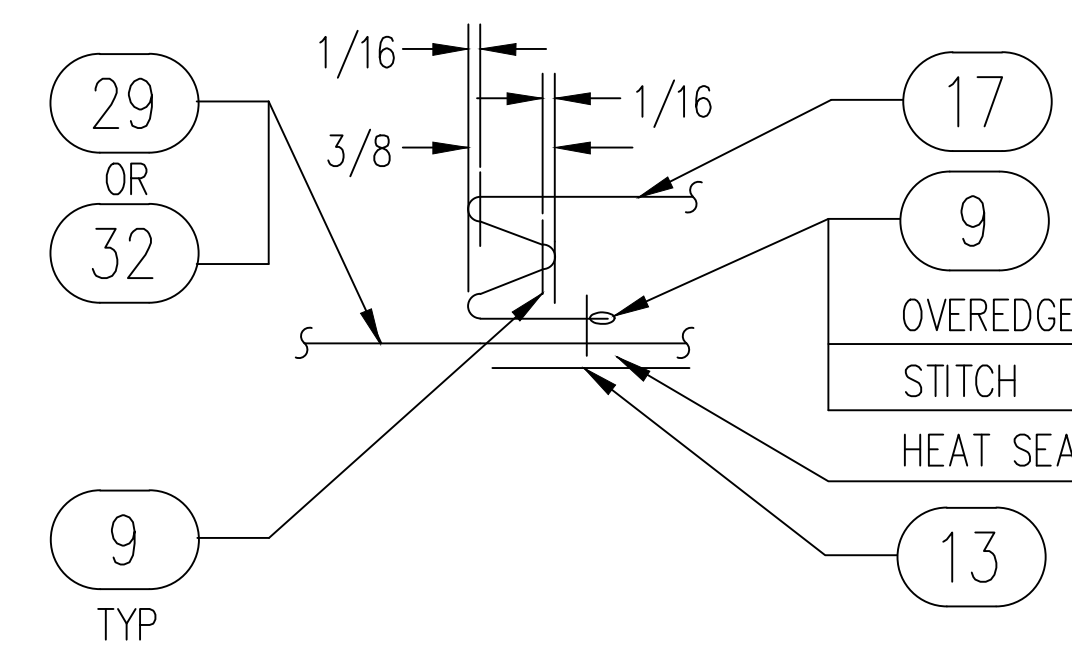
SECTION B - B



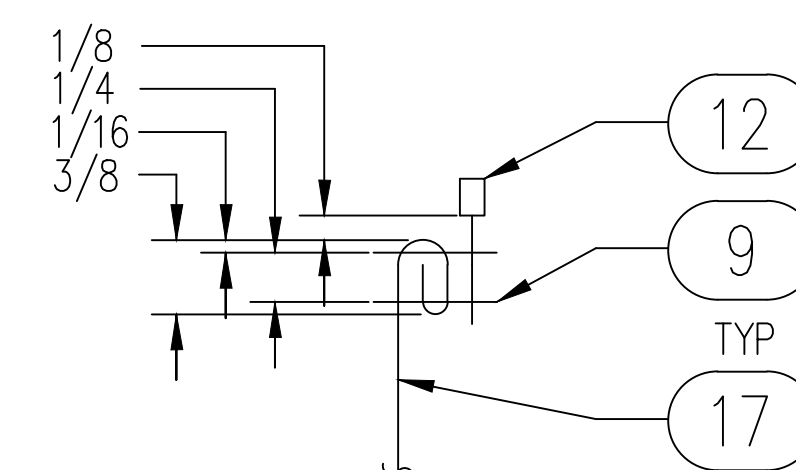
SECTION F - F



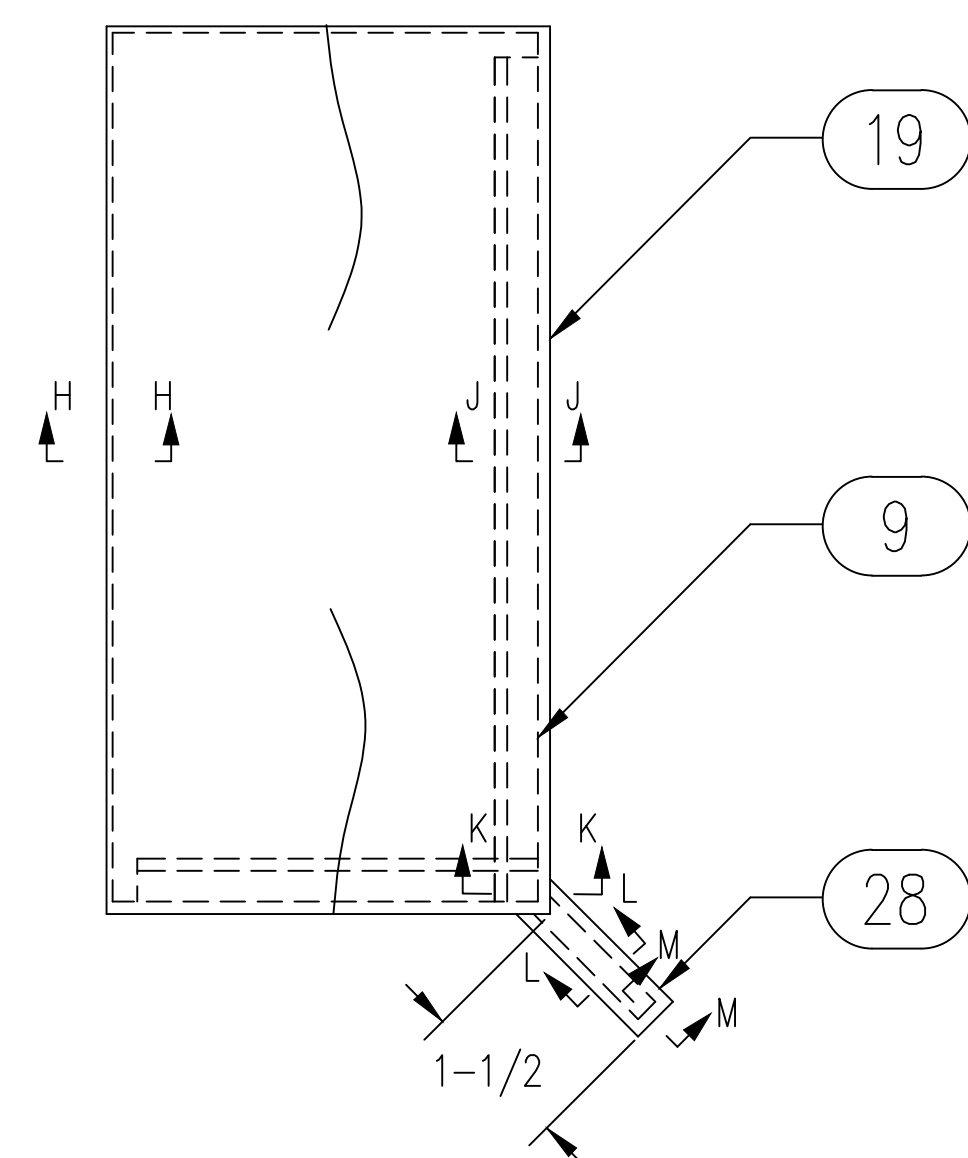
SECTION C - C



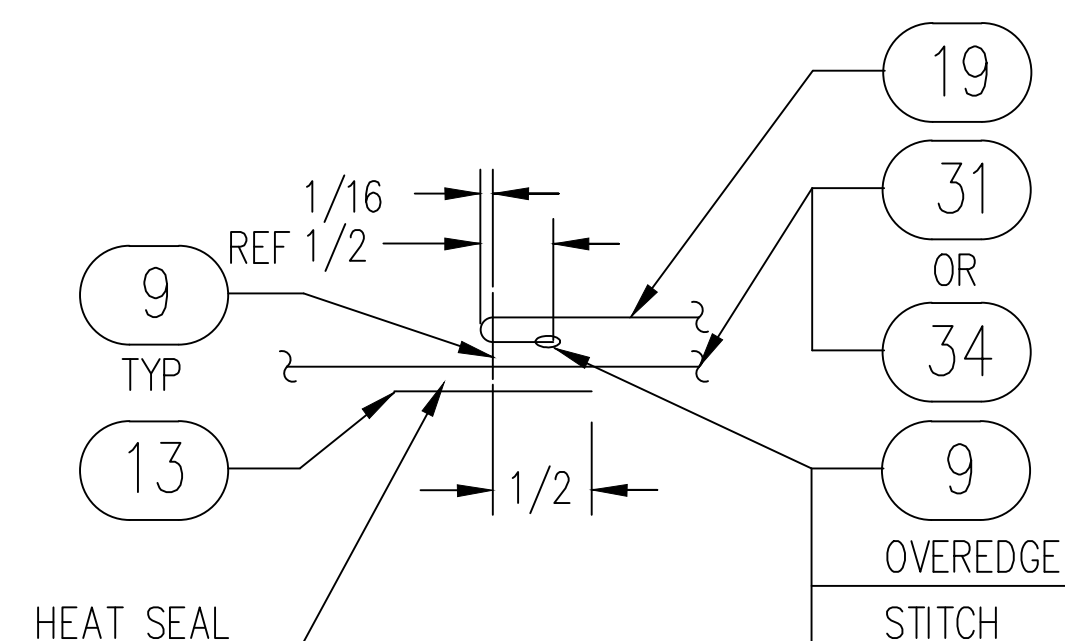
SECTION G - G



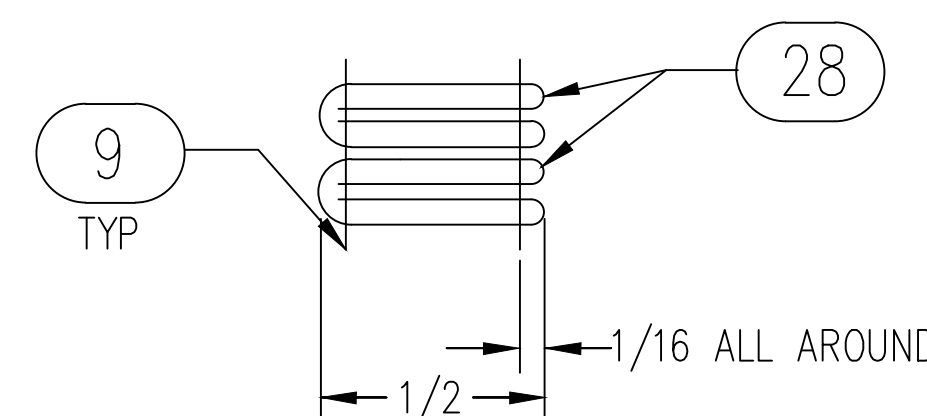
SECTION D - D



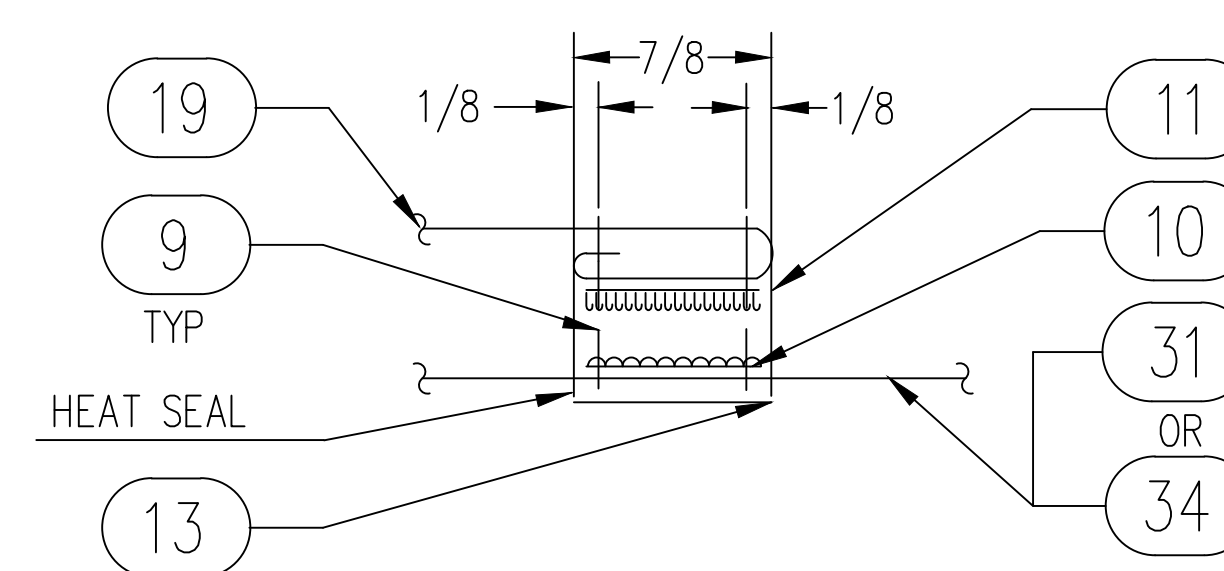
2 SUBASSEMBLY 2



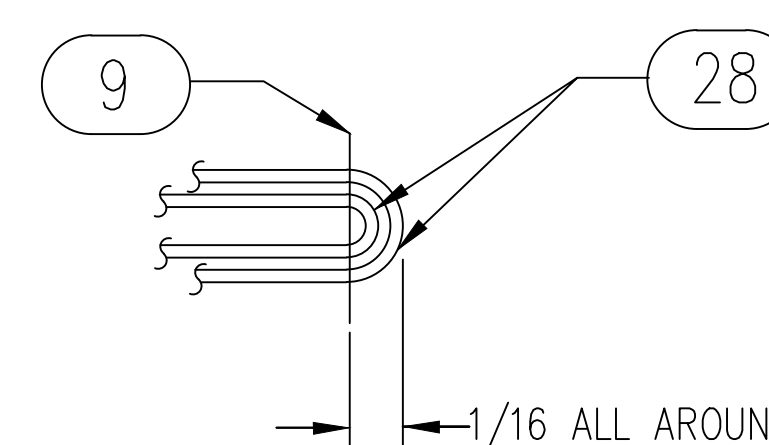
SECTION H - H



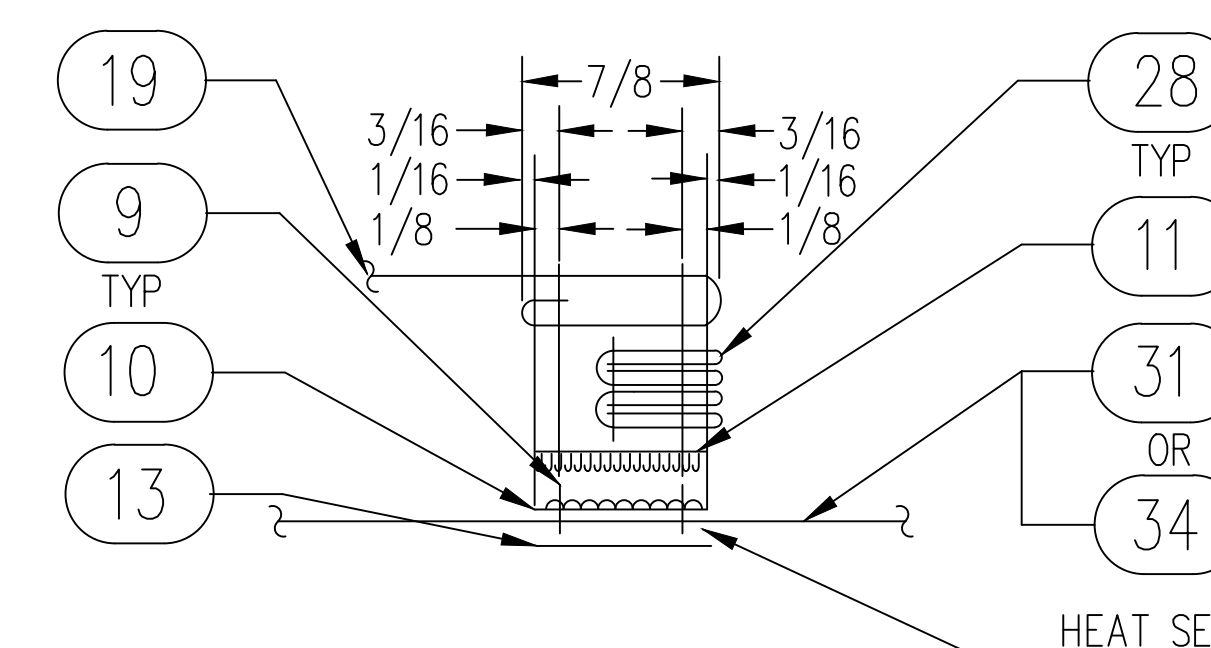
SECTION L - L



SECTION J - J



SECTION M - M



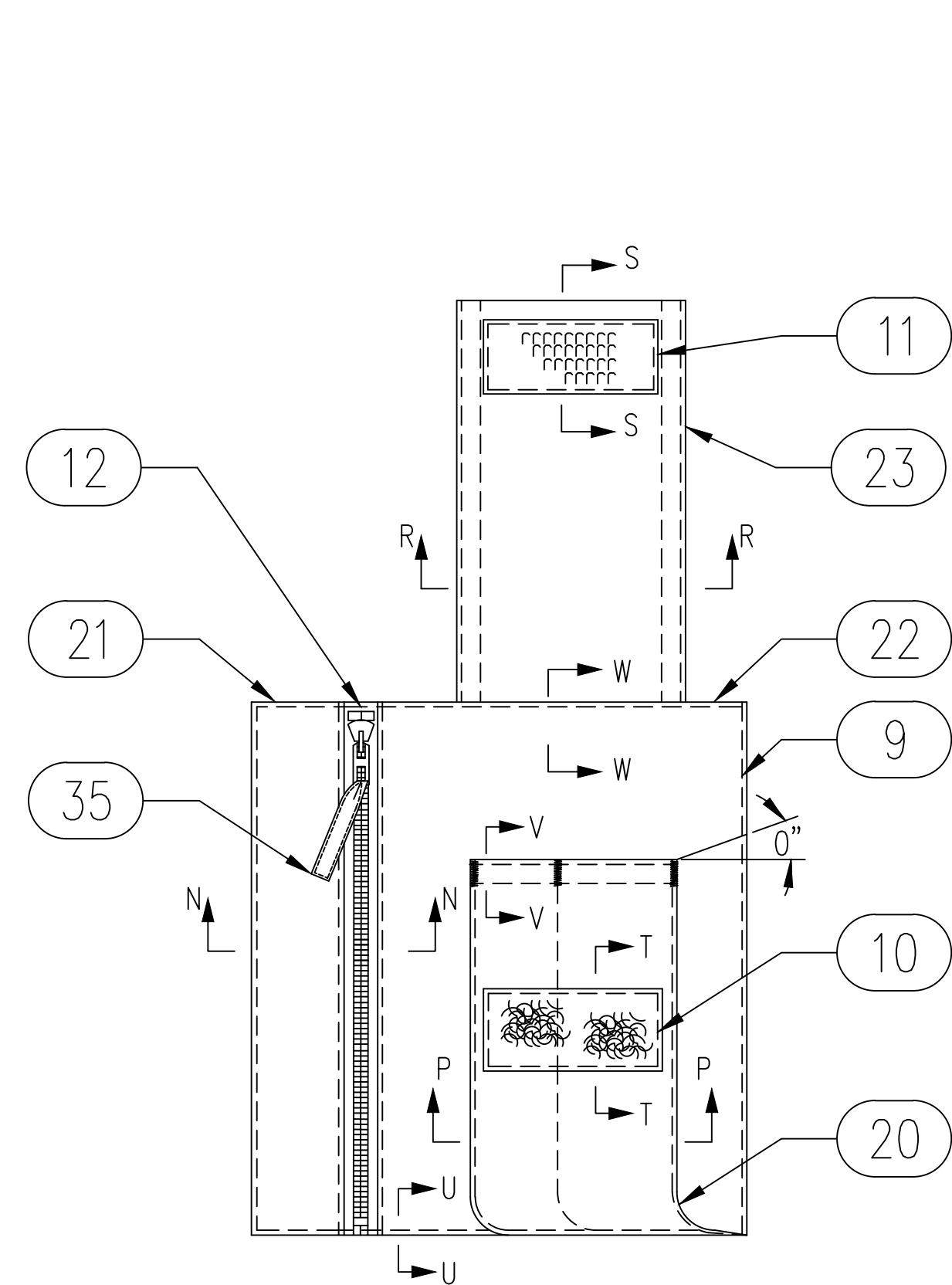
SECTION K - K

CAD MAINTAINED. CHANGES SHALL BE INCORPORATED BY THE DESIGN ACTIVITY.

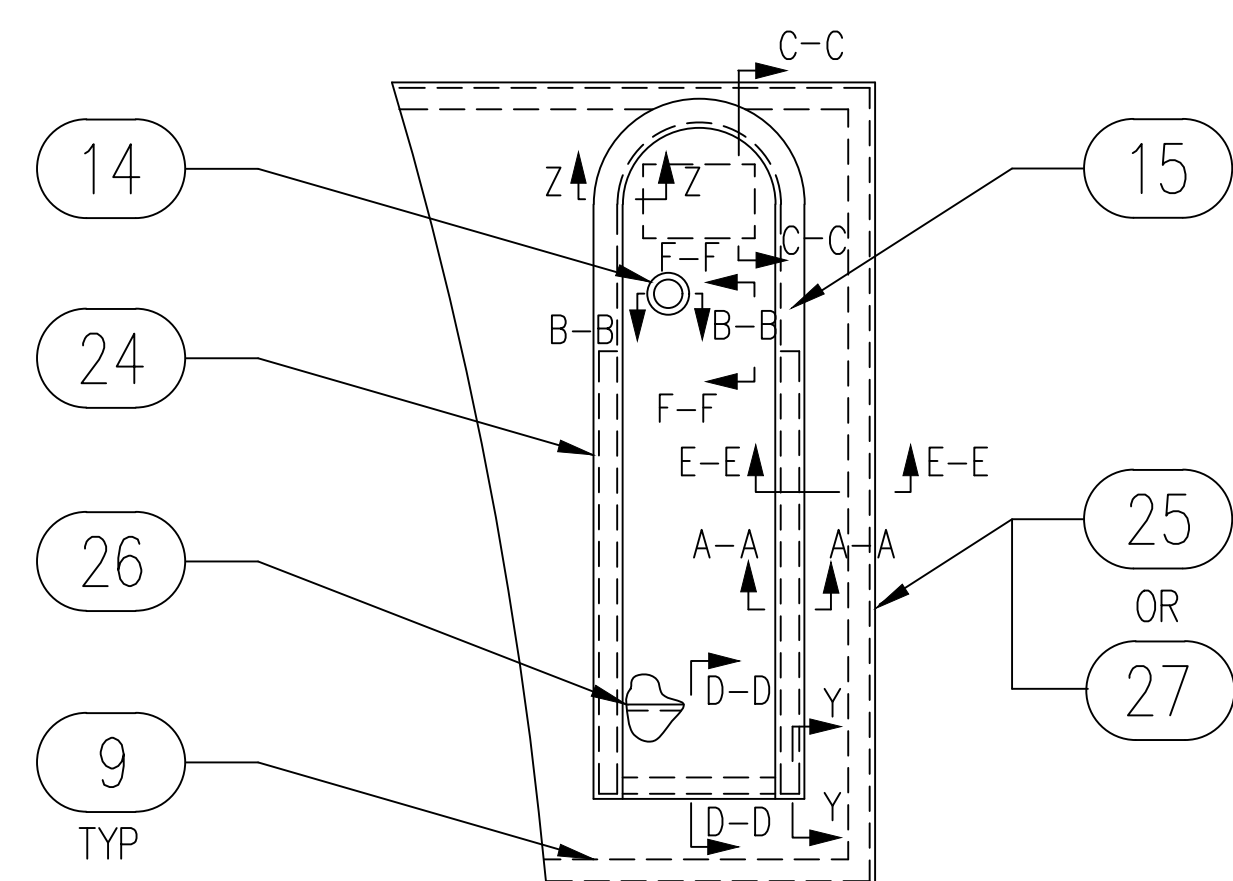
DISTRIBUTION STATEMENT A:
APPROVED FOR PUBLIC RELEASE;
DISTRIBUTION IS UNLIMITED.

NAVAL AIR WARFARE CENTER AIRCRAFT DIVISION/PATUXENT RIVER HUMAN SYSTEMS ENGINEERING DEPT (4.8.)		SIZE	CAGE NO.	NAVAIR DWG. NO.	REV.
DRAWN	J SWINSKI	D	30003	3769AS105	D
CHECKED	B HARVEY	SCALE	NONE	SEE 2002-12	SHEET 2 OF 3

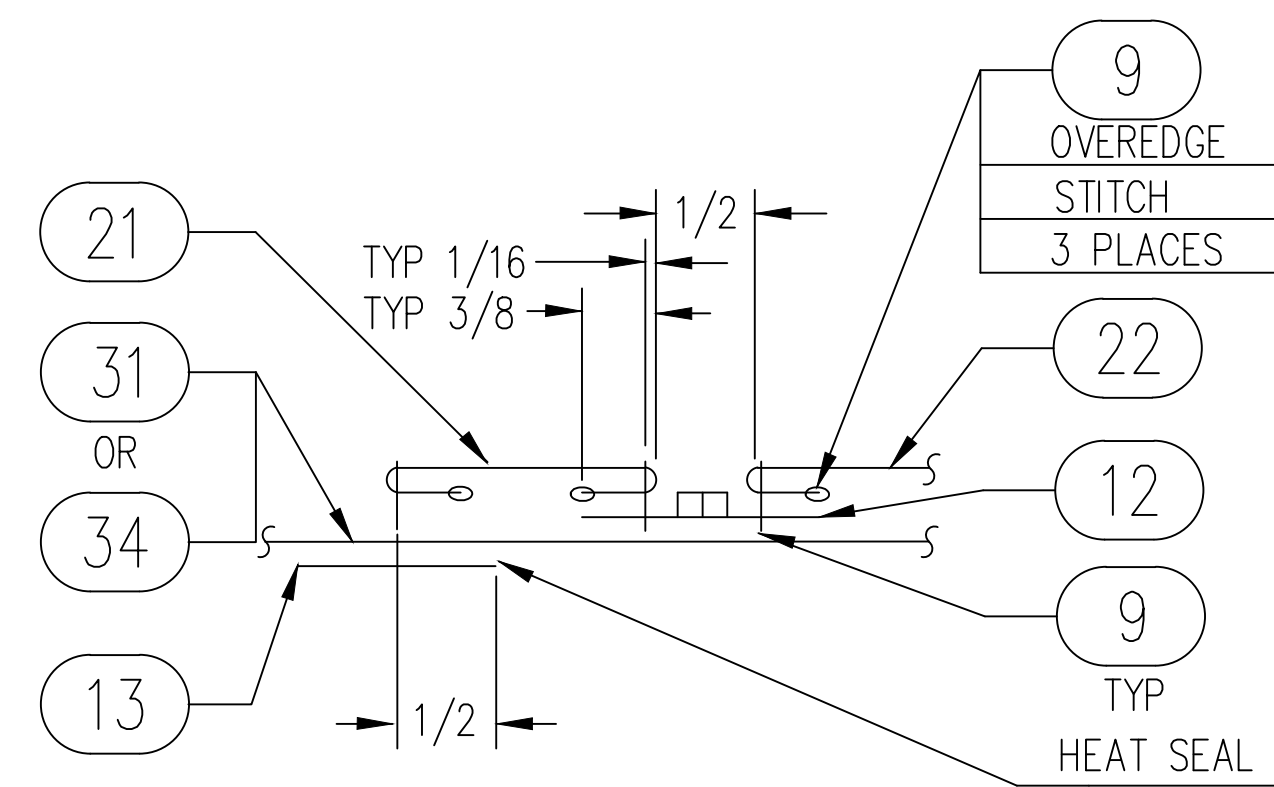
3769AS105 D



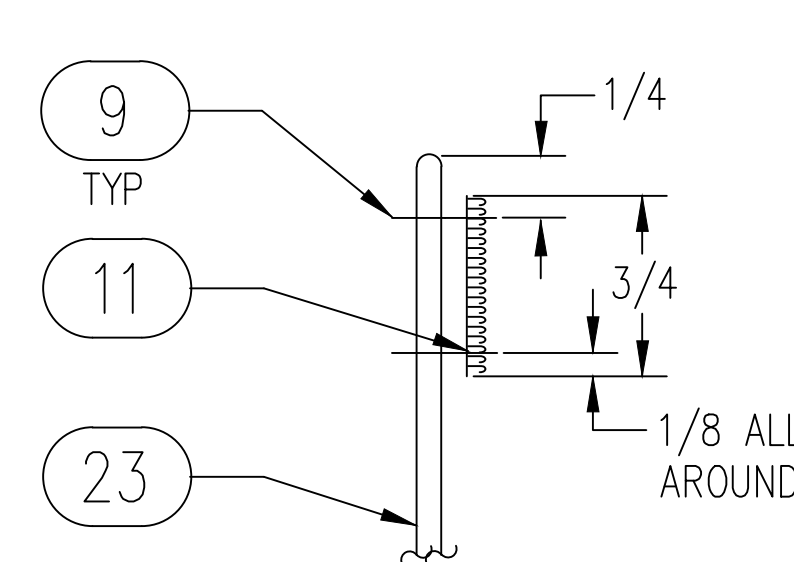
3 SUBASSEMBLY



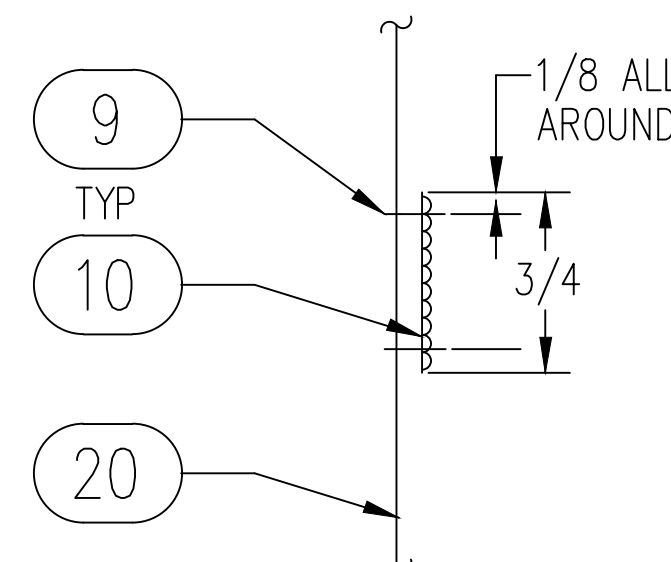
4 SUBASSEMBLY



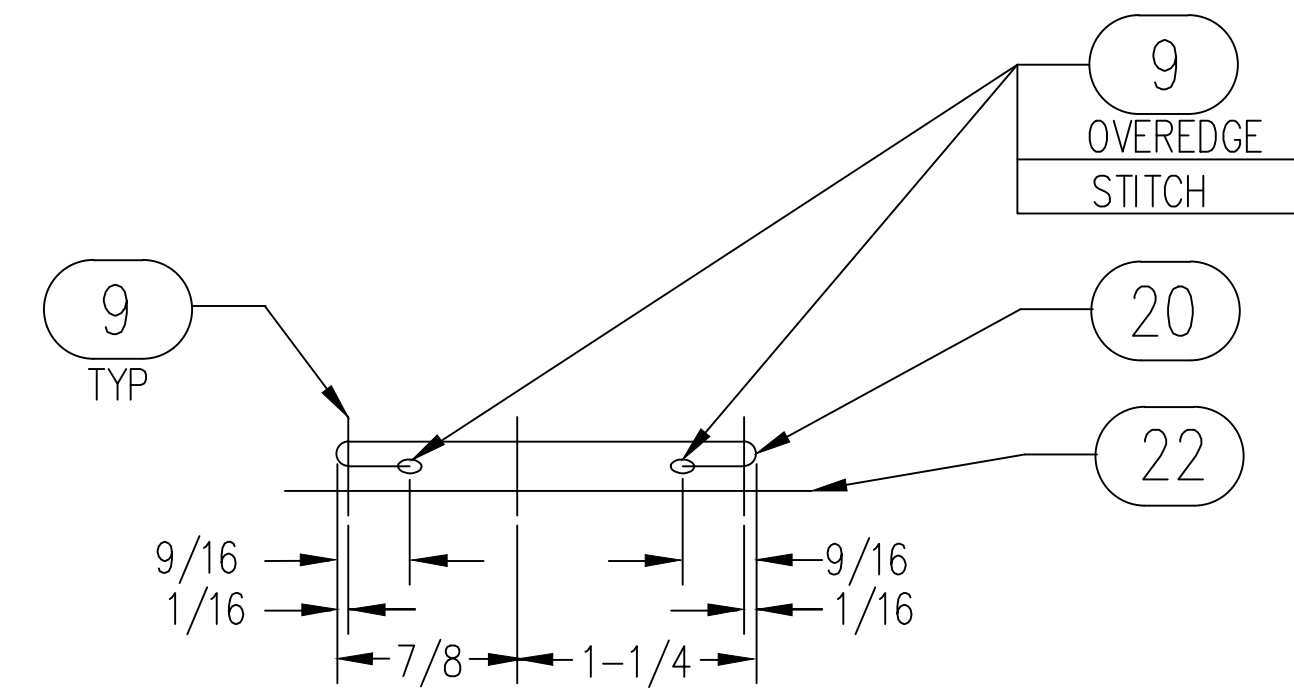
SECTION N - N



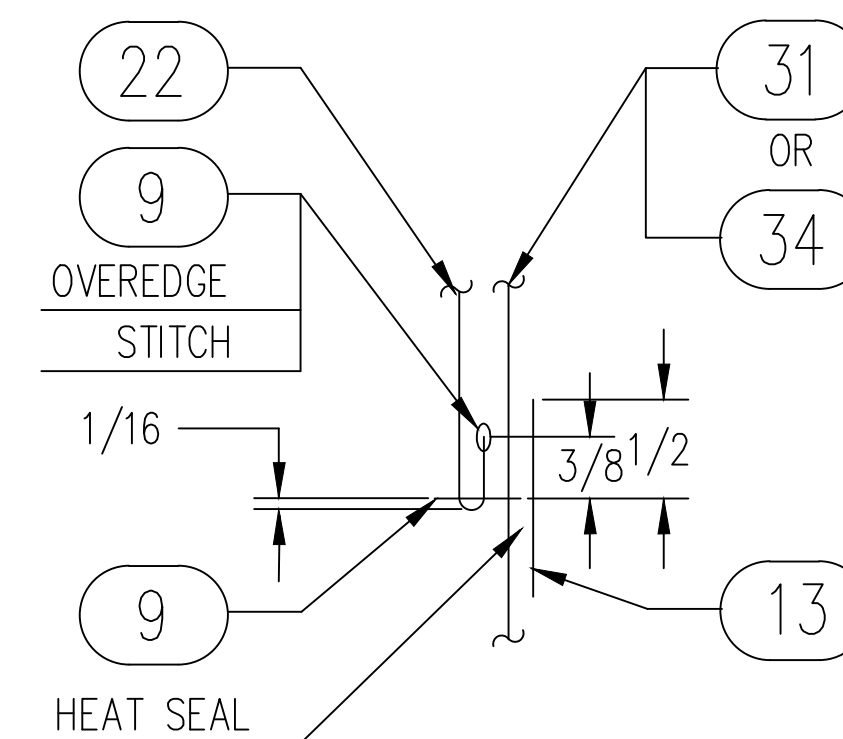
SECTION S - S



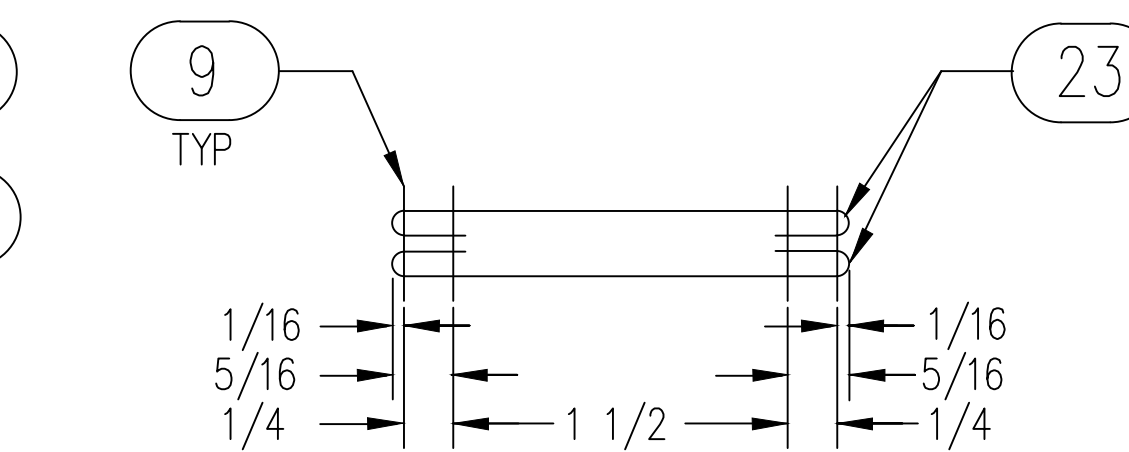
SECTION T - T



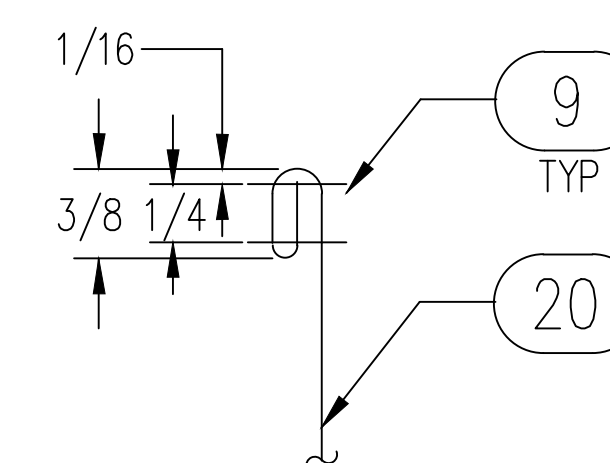
SECTION P - P



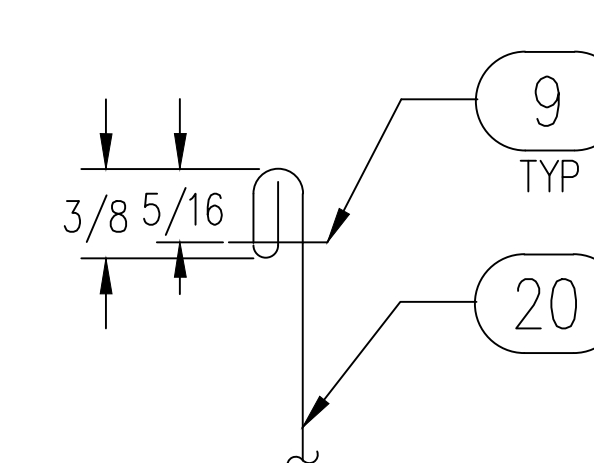
SECTION U - U



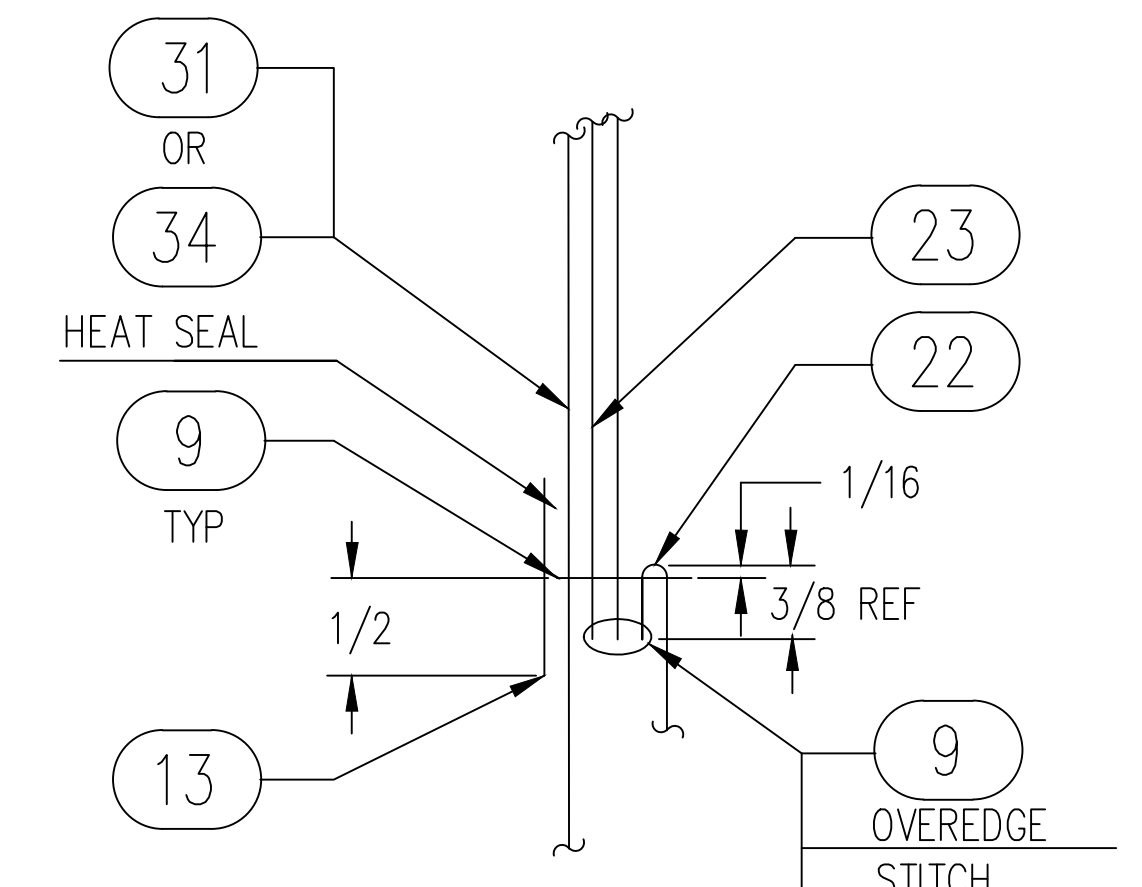
SECTION R - R



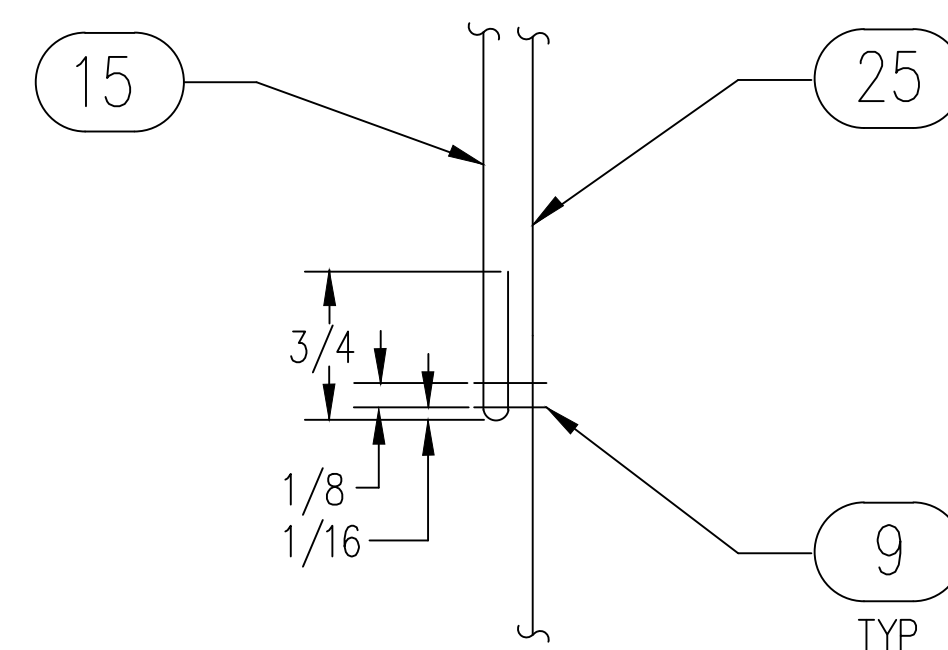
SECTION V - V



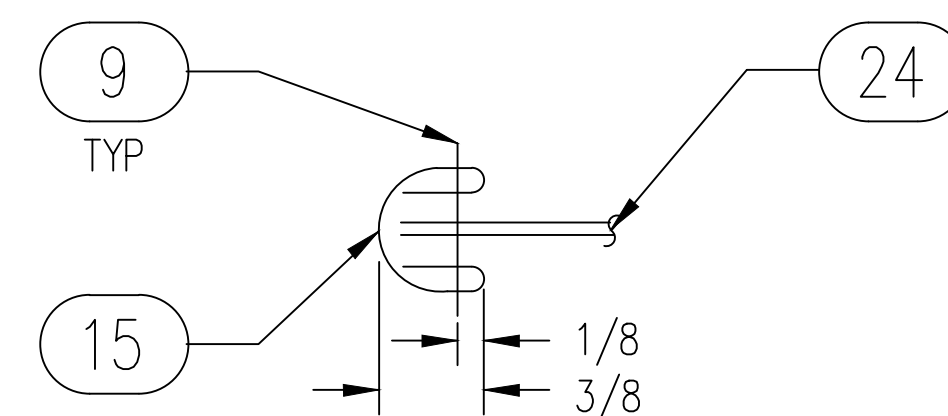
SECTION V – V
OPTIONAL



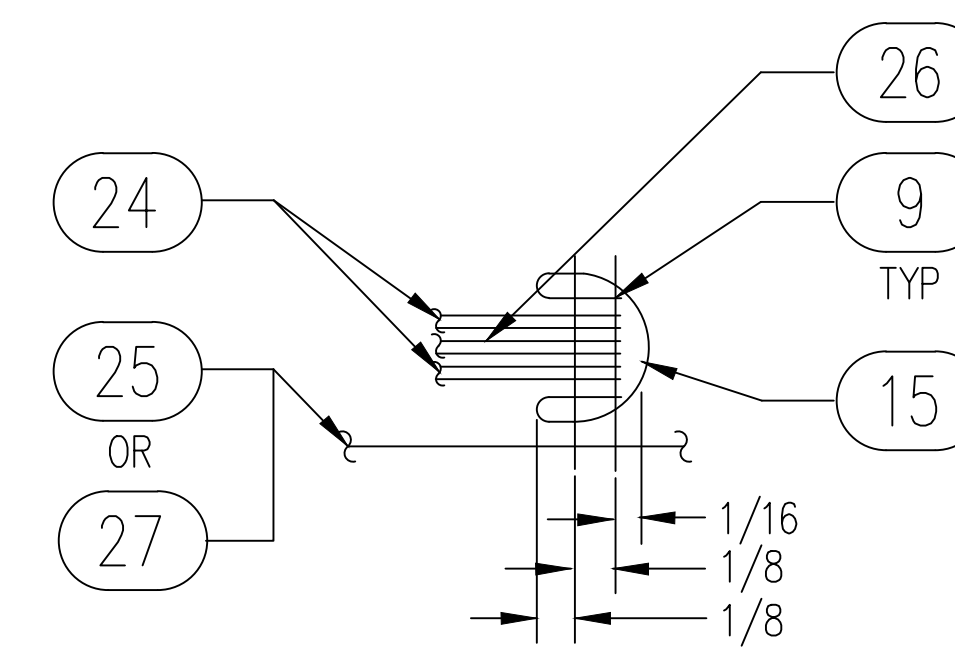
SECTION W - W



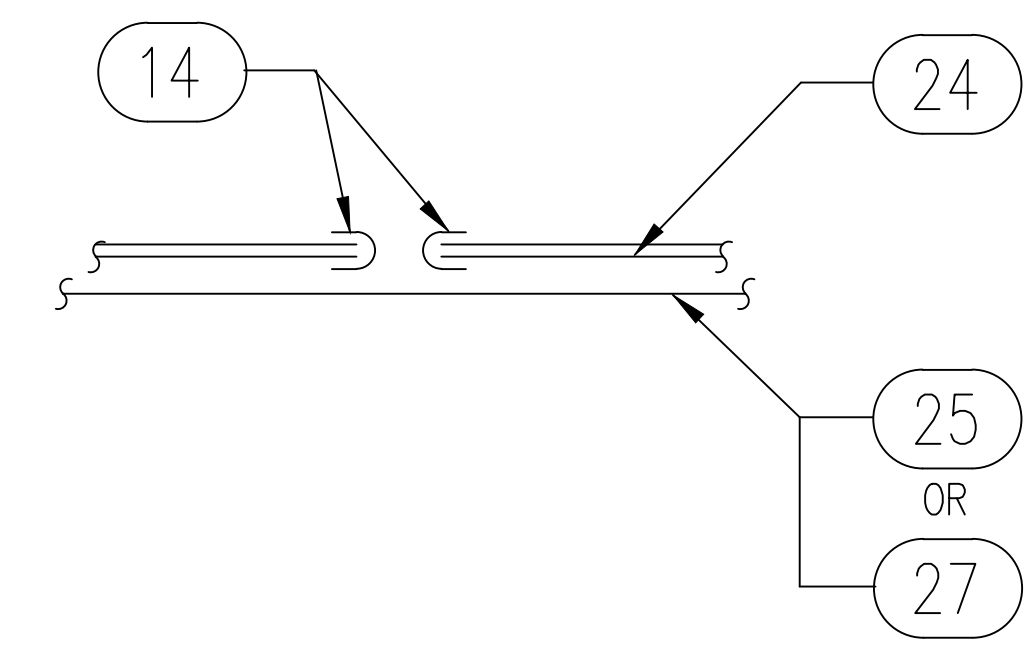
SECTION Y - Y



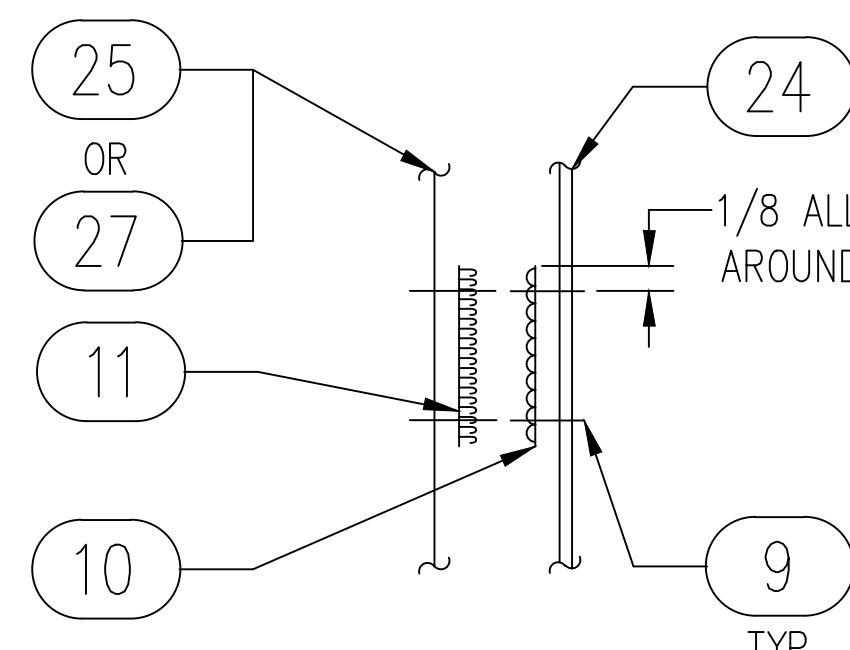
SECTION Z - Z



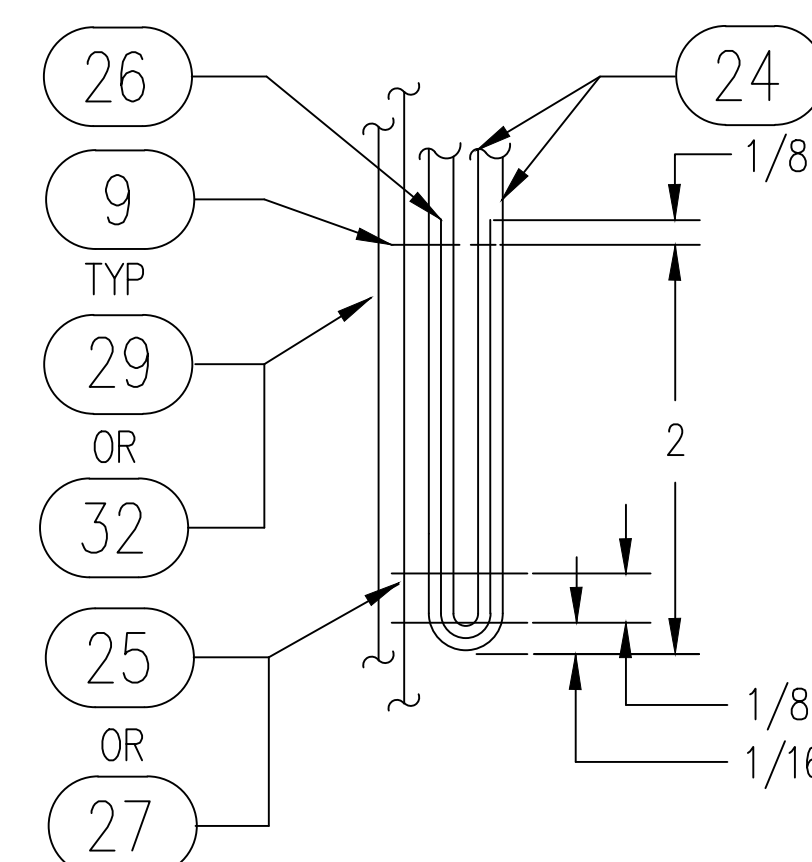
SECTION AA - AA



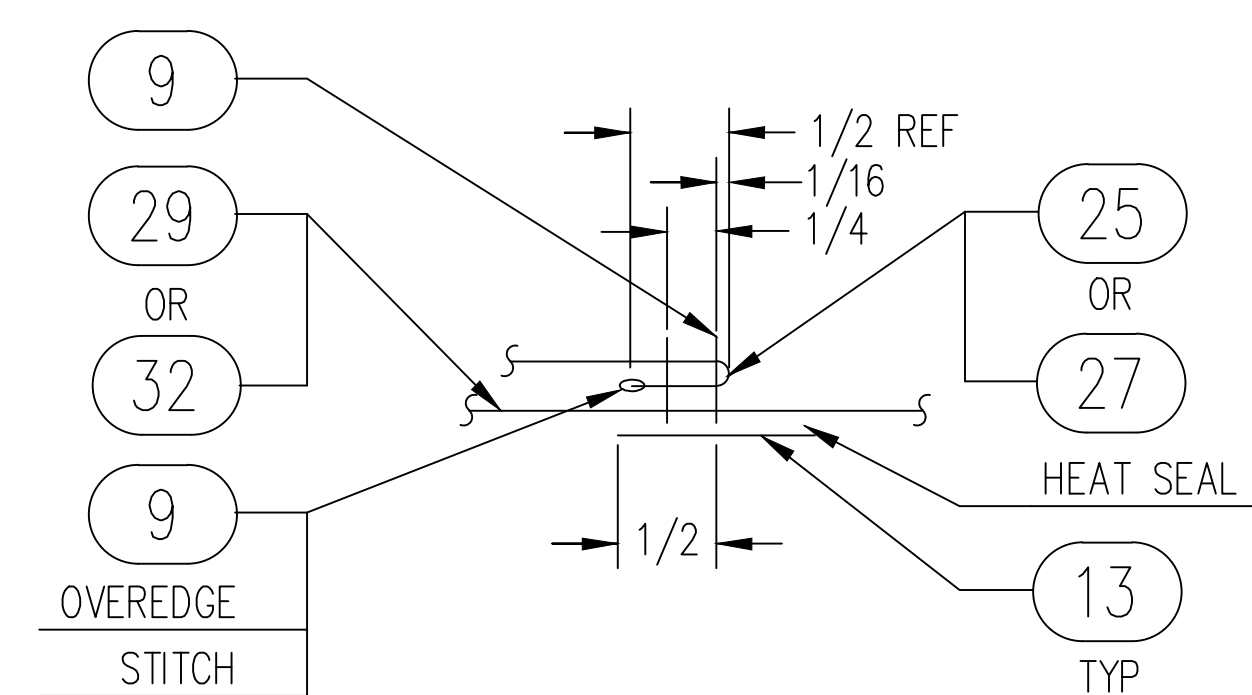
SECTION BB - BB



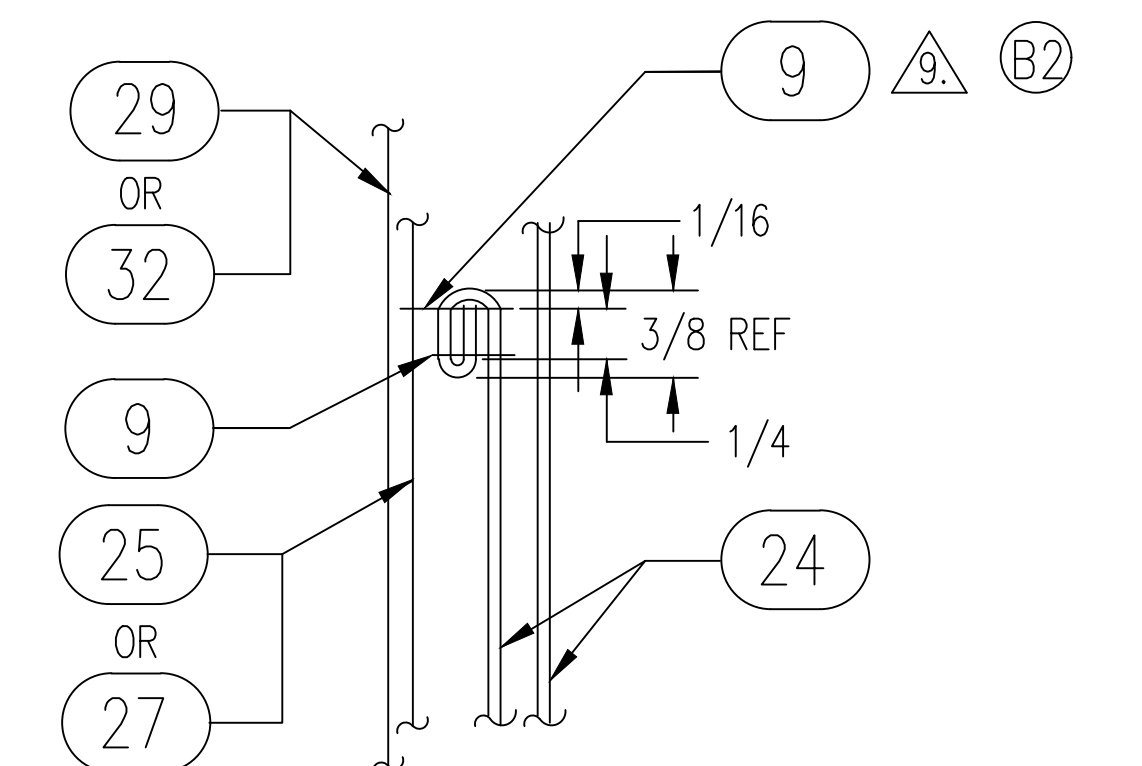
SECTION CC – CC



SECTION DD - DD



SECTION EE - EE



SECTION FF - FF

CAD MAINTAINED. CHANGES SHALL BE
INCORPORATED BY THE DESIGN ACTIVITY.

DISTRIBUTION STATEMENT A:
APPROVED FOR PUBLIC RELEASE;
DISTRIBUTION IS UNLIMITED.

NAVAL AIR WARFARE CENTER AIRCRAFT DIVISION/PATUXENT RIVER HUMAN SYSTEMS ENGINEERING DEPT (4.6.)		SECTION FF - FF	
DRAWN	J SIWINSKI	SIZE D	CAGE NO. 30003
CHECKED	R HARVEY	NAVAIR DWG. NO.	3769AS105
		REV.	D
SCALE	NONE	NAVAIR 2002-12	SHEET 3 OF 3